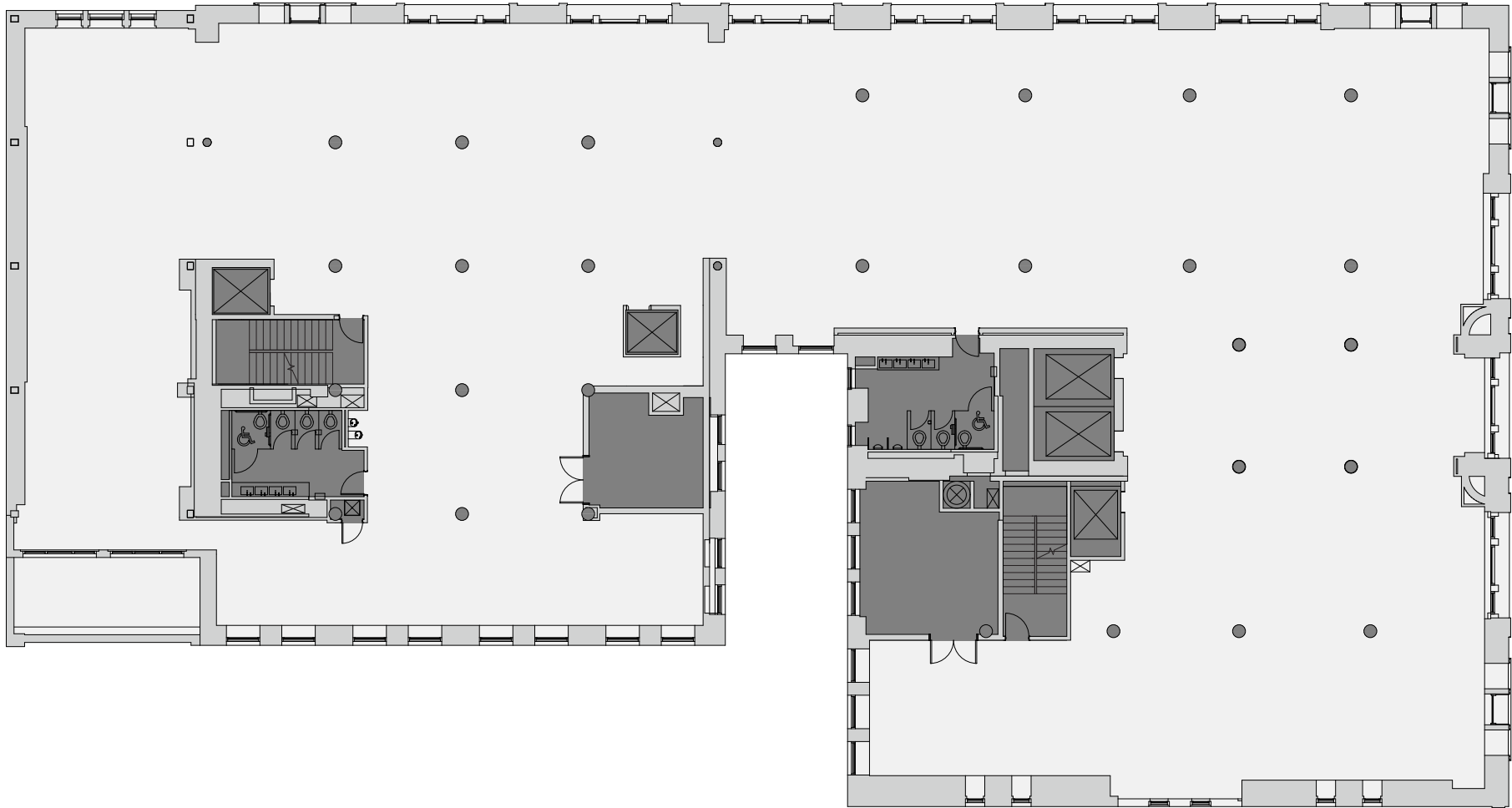


Floor 6
23,000 RSF

WEST 20TH STREET



FIFTH AVENUE

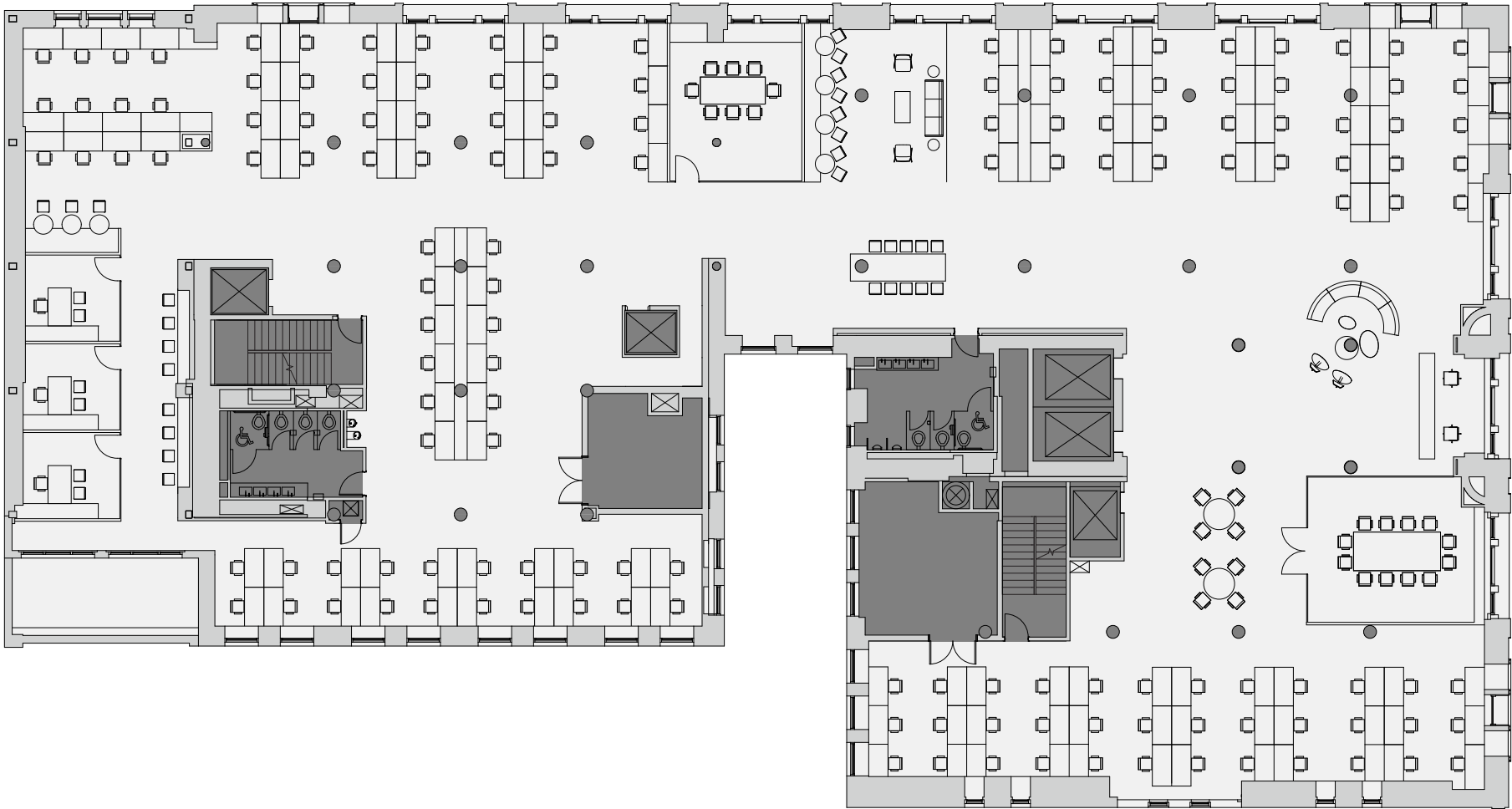
David C. Berkey (212) 920-3388
David.Berkey@ll-holding.com

Andrew Wiener (646) 341-9838
Andrew.Wiener@ll-holding.com

David Young (212) 201-4086
David.Young@ll-holding.com

Floor 6, Max Density Plan
23,000 RSF

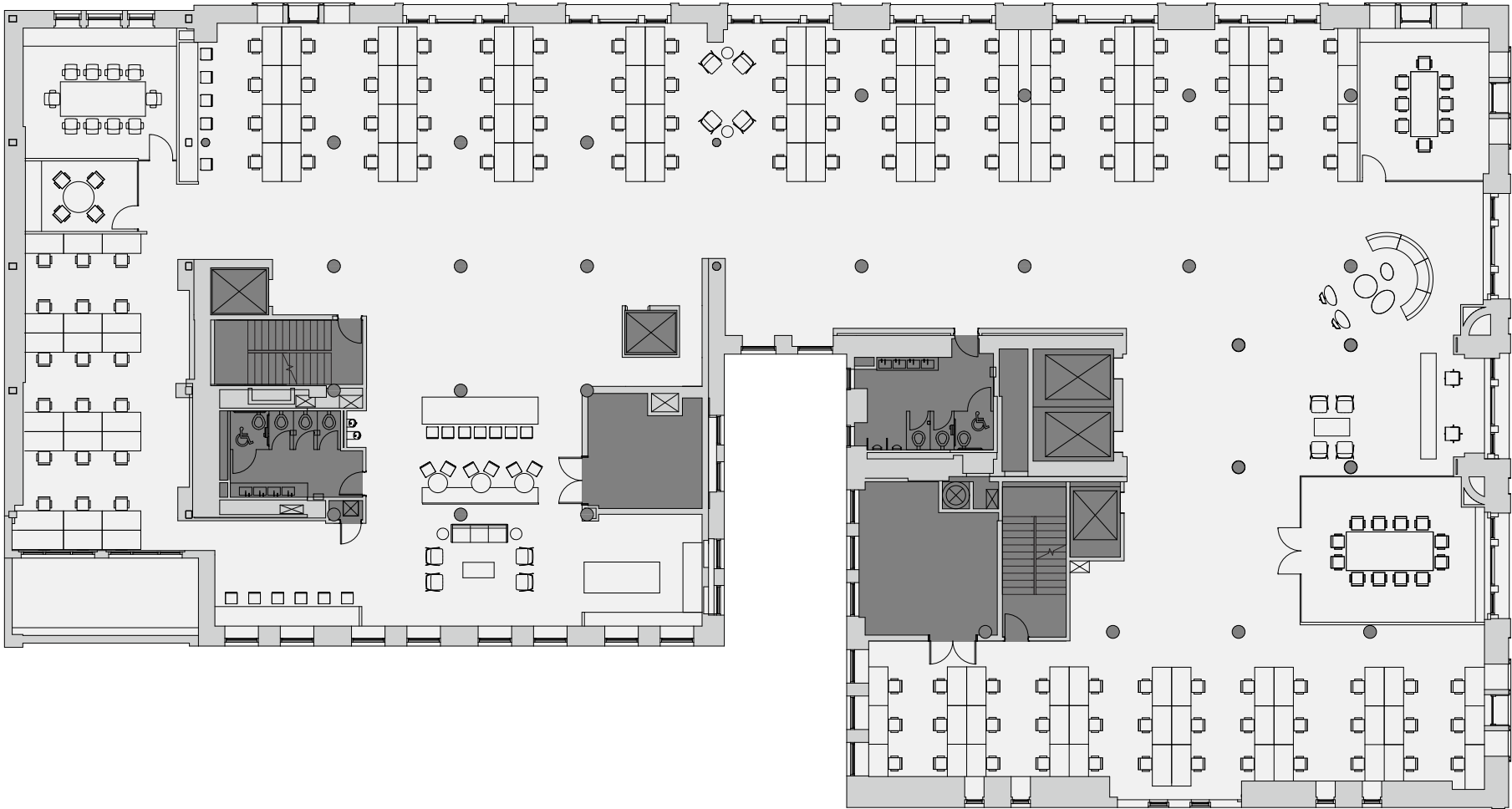
WEST 20TH STREET



FIFTH AVENUE

Floor 6, Progressive Plan
23,000 RSF

WEST 20TH STREET



FIFTH AVENUE

David C. Berkey (212) 920-3388
David.Berkey@ll-holding.com

Andrew Wiener (646) 341-9838
Andrew.Wiener@ll-holding.com

David Young (212) 201-4086
David.Young@ll-holding.com